

# An Implicit Approach to Cloth Synthesis

GraphiCon' 99

# Introduction



- A problem of Cloth visualization

- ◆ Applications:

- ★ Animation, Art

- ★ Fashion design

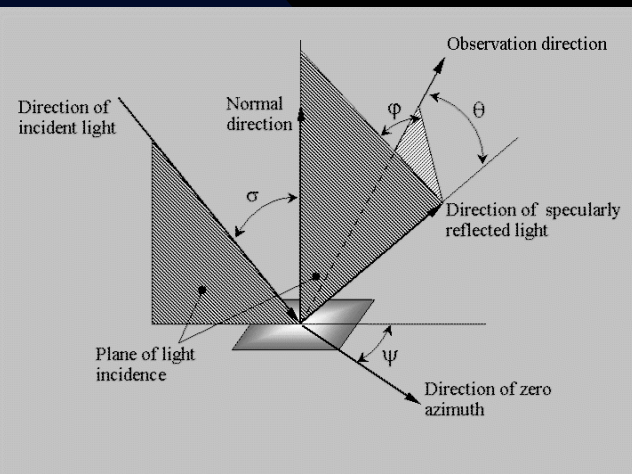
- ★ Design of new fabric

- ◆ Far view

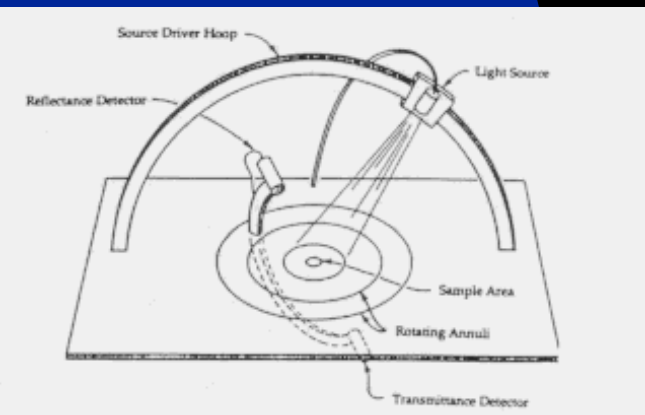
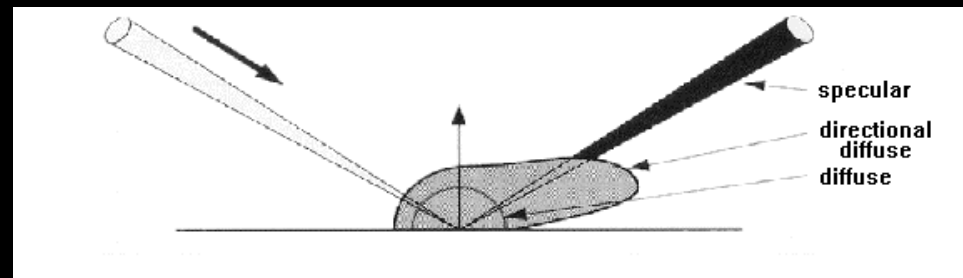
- ◆ Close view



# Cloth reflection model



## Anisotropic reflection



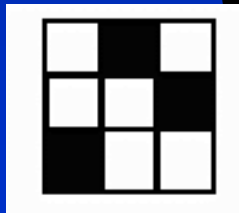
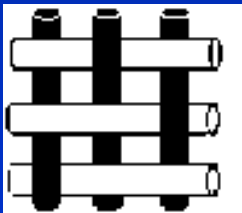
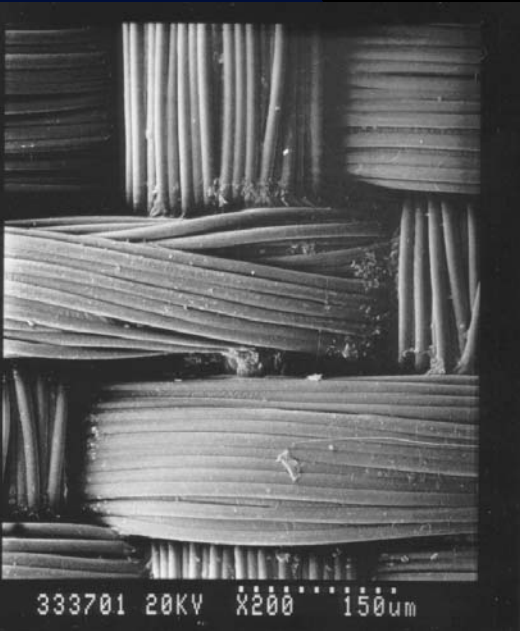
- ◆ BRDF
- ◆ Gonioreflectometer

# Previous work

- An Approach to Cloth Synthesis and Visualization (Graphicon'97)
  - ◆ Explicit cloth model

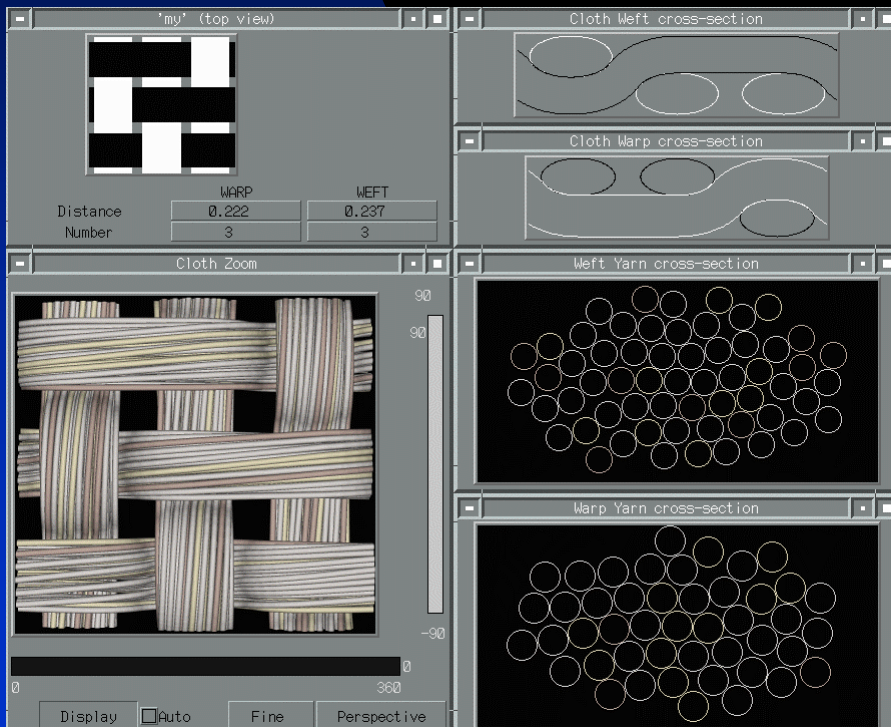


- ◆ Virtual goniometric spectrophotometer



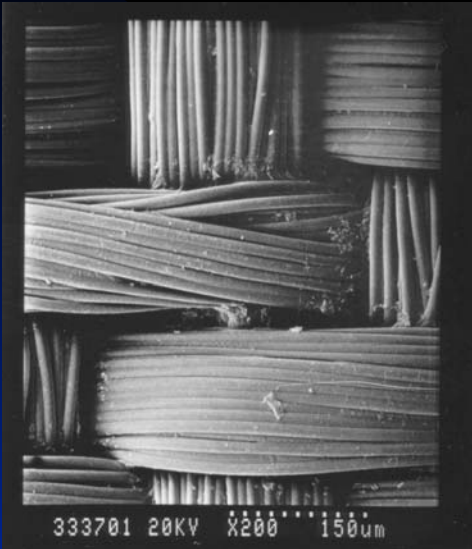
# Cloth design

- Modeling of explicit knitting pattern

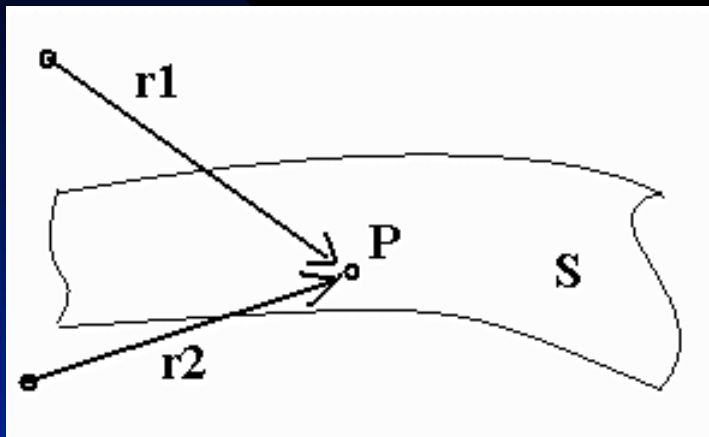


# Cloth elements

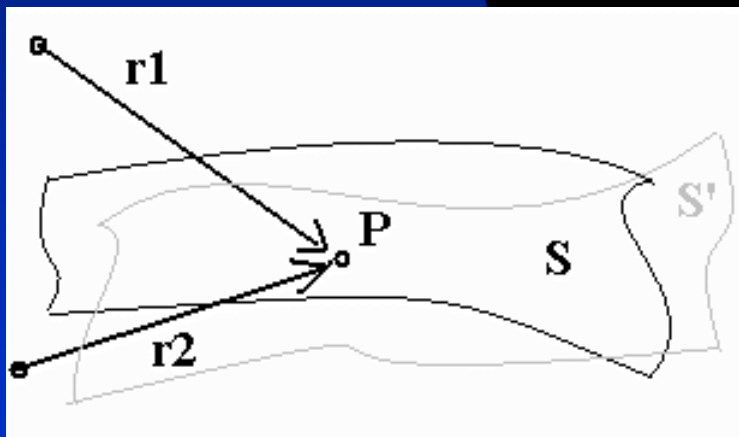
- Deterministic elements:
  - ◆ Knitting pattern
  - ◆ Color of yarns
  - ◆ Number of fibers in yarns
  - ◆ Fiber cross-section shape
- Probabilistic elements:
  - ◆ Fiber distribution along yarns
  - ◆ Fiber surface roughness



# Light propagation in cloth



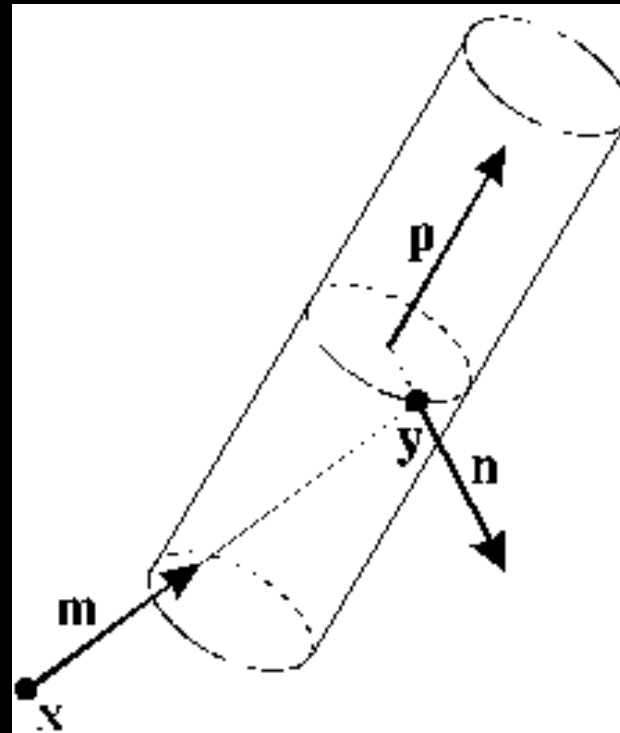
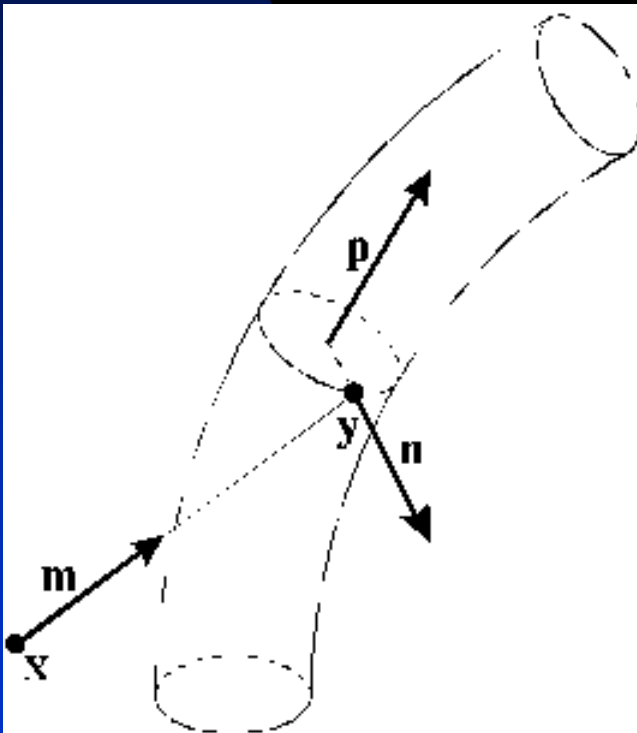
- Deterministic approach



- Statistical approach

# Stochastic Ray Tracing

- $\text{srtc}(x, m, f) = (y, n, p)$





# Cloth characteristics

- Specific Length of fibers

- ◆  $dl = f(p, x) d\Omega dV$

- ★  $p$  - fiber direction       $d\Omega$  - solid angle element

- ★  $x$  - point in the space       $dV$  - volume element

- Specific visible area

- ◆  $ds_m = h(m, p, x) d\Omega dV$

- ★  $m$  - ray direction

- Total specific visible area

- ◆  $dS_m = H(m, x) dV$

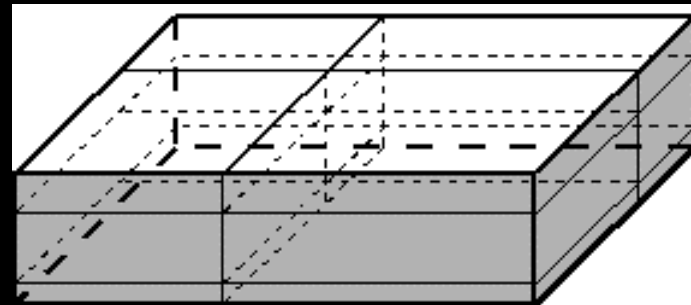
- ◆  $H(m, x) = \int_{p \in E^+} h(m, p, x) d\Omega$

# Stochastic Ray Tracing

- $P \{ |x-y| < t \} = 1 - \exp(-at)$ 
  - ◆  $a = H(m, x), \quad t \geq 0$
  - ◆  $x$  - ray origin,  $m$  - ray direction
  - ◆  $y$  - nearest ray-fiber intersection
- $dp = h(m, p, x) / H(m, x) d\Omega$ 
  - ◆  $p \in E^+$  - fiber direction
- $n = \sqrt{1-a^2} [(m,p)p - m] + a[m \times p]$ 
  - ◆  $a$  - projection of  $n$  to  $[m \times p]$ ,  $a \in [-1, 1]$

# Distribution Calculator

- $f(p, x) = f_v(p)$



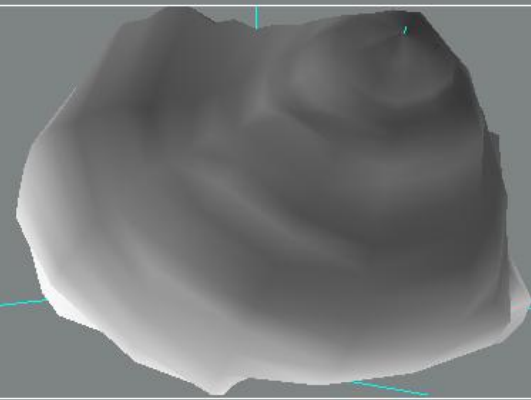
- $f_v(p) = \sum_{p': |p' \times p| \leq \sin \omega} I_{p', \omega} [2\pi (1 - \cos \omega) V]^{-1}$

# Cloth BSDF cross-sections

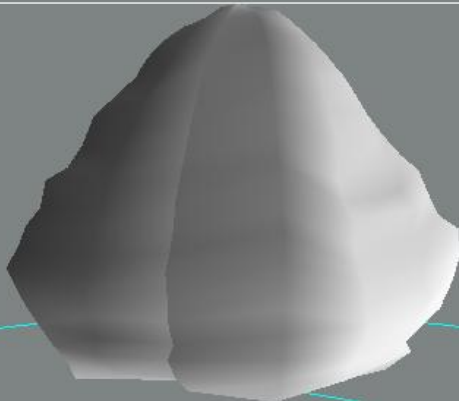
sigma=0  
psi=90



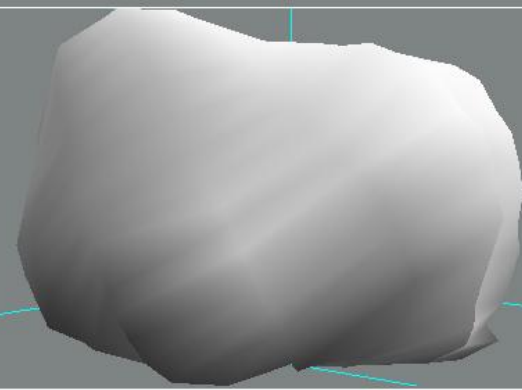
sigma=30  
psi=0



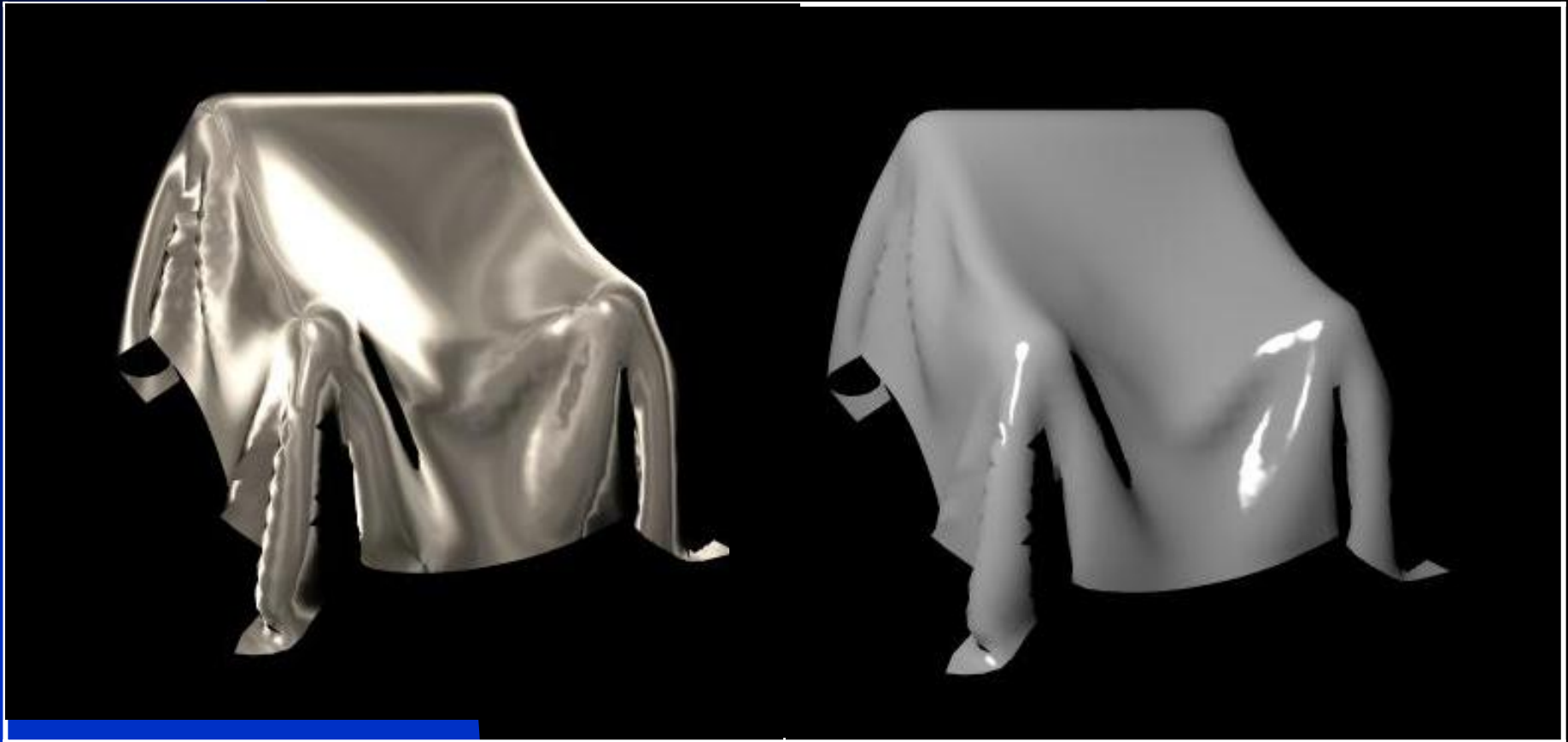
sigma=5  
psi=115



sigma=30  
psi=198



# Two chairs



International Conference Graphicon 1999, Moscow,  
Russia, <http://www.graphicon.ru/>



International Conference Graphicon 1999, Moscow,  
Russia, <http://www.graphicon.ru/>